



# MONTHLY MEMBERSHIP PROGRESS REPORT

District 202 F

Results as of: 02/28/2019

GMT: CLIFFORD HEYWOOD

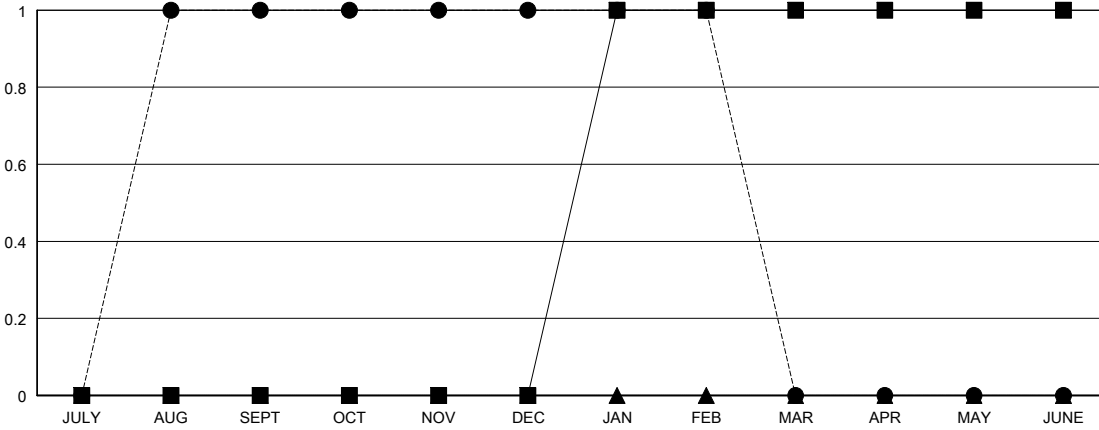
LOCATION NEW ZEALAND

GMT CA

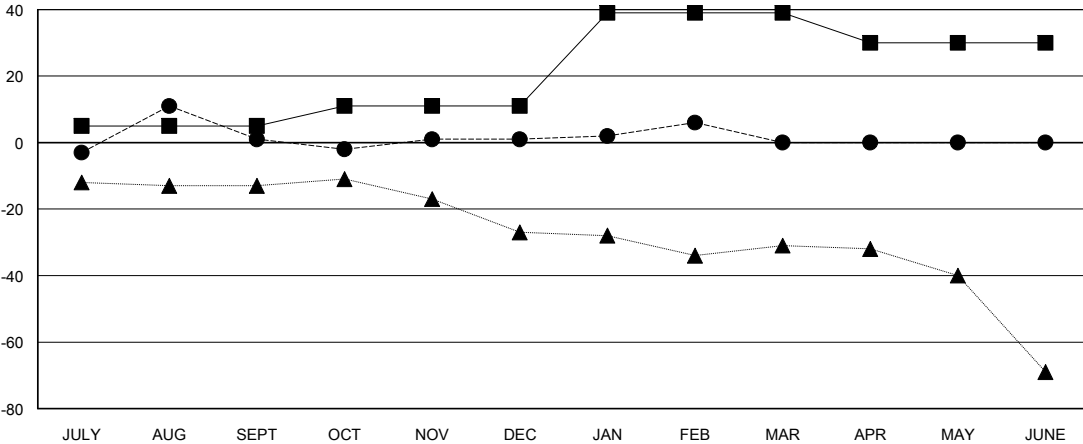
Clubs			
RESULTS FOR 2018-2019			
QUARTER	NEW CLUB GOAL	NEW CLUBS	DROPPED CLUBS
JULY/AUG/SEPT	0	1	2
OCT/NOV/DEC	0	0	0
JAN/FEB/MAR	1	0	0
APR/MAY/JUNE	0	0	0

Members			
RESULTS FOR 2018-2019			
QUARTER	MEMBER GROWTH NET GOAL	MEMBER GROWTH ACTUAL	DROPPED MEMBERS ACTUAL (including transfers)
JULY/AUG/SEPT	5	37	33
OCT/NOV/DEC	6	26	22
JAN/FEB/MAR	28	8	3
APR/MAY/JUNE	-9	0	0

GOALS AND ACTUAL NEW CLUBS CUMULATIVE



GOALS AND ACTUAL MEMBERS CUMULATIVE



DROPPED CLUBS: 2
------------------

25 CLUBS OF 48 ADDED 1 OR MORE NEW MEMBERS

GENDER DISTRIBUTION	
MALE	899 (64.91%)
FEMALE	486 (35.09%)
Women Percentage Fiscal Year Goal: 37%	

DROPPED MEMBERS	
DECEASED	15
CLUB CANCELLED	0
OTHER	43
<b>TOTAL</b>	<b>58</b>

[CLICK HERE FOR CUMULATIVE MEMBERSHIP DATA](#)

TOTAL FAMILY UNIT MEMBERS	63
FAMILY MEMBERS PAYING HALF DUES	32